



CITY OF FORT LAUDERDALE, FL | FISCAL YEARS 2022-2026

PROPOSED COMMUNITY INVESTMENT PLAN



2022-2026

Adaptation Action Areas

Overview

The 2011 Florida Legislature made significant changes to the state's growth management laws, including creating Adaptation Action Areas (AAA). In accordance with Section 163.3164(1) and Section 163.3177(6)(g)(10), Florida Statutes, an AAA is an optional designation within the coastal management element of a local government's comprehensive plan which identifies one or more areas that experience coastal flooding due to extreme high tides and storm surge, and that are vulnerable to the related impacts of rising sea levels for the purpose of prioritizing funding for infrastructure needs and adaptation planning. In 2014, the City adopted Ordinance No. C-14-27 amending the Comprehensive Plan to incorporate a new goal, objective, and thirteen policies associated with AAAs.



In January 2015, the Florida Department of Economic Opportunity recognized and accepted the adopted comprehensive plan amendment.

Minimum AAA qualifying criteria may include, but are not limited to the following:

- Areas experiencing coastal flooding; and
- Areas experiencing or projected to be experiencing tidal flooding; or
- Areas with hydrological connections to coastal waters; or
- Areas below, at, or near mean higher high water; or
- Storm surge evacuation zones; or
- Areas with other related impacts of sea level rise.

The designation of AAA through this Community Investment Plan represents the City's commitment to invest public dollars to reduce the vulnerability of those areas to coastal flooding. Designated locations are being prioritized for infrastructure and other improvements intended to reduce impacts to assets currently experiencing coastal flooding as well as reduce the areas' future risk and vulnerability to the effects of sea level rise. These improvements can range widely from the installation of tidal valves or elevating seawalls to incorporating sea level rise projections into the design of new construction capital projects.

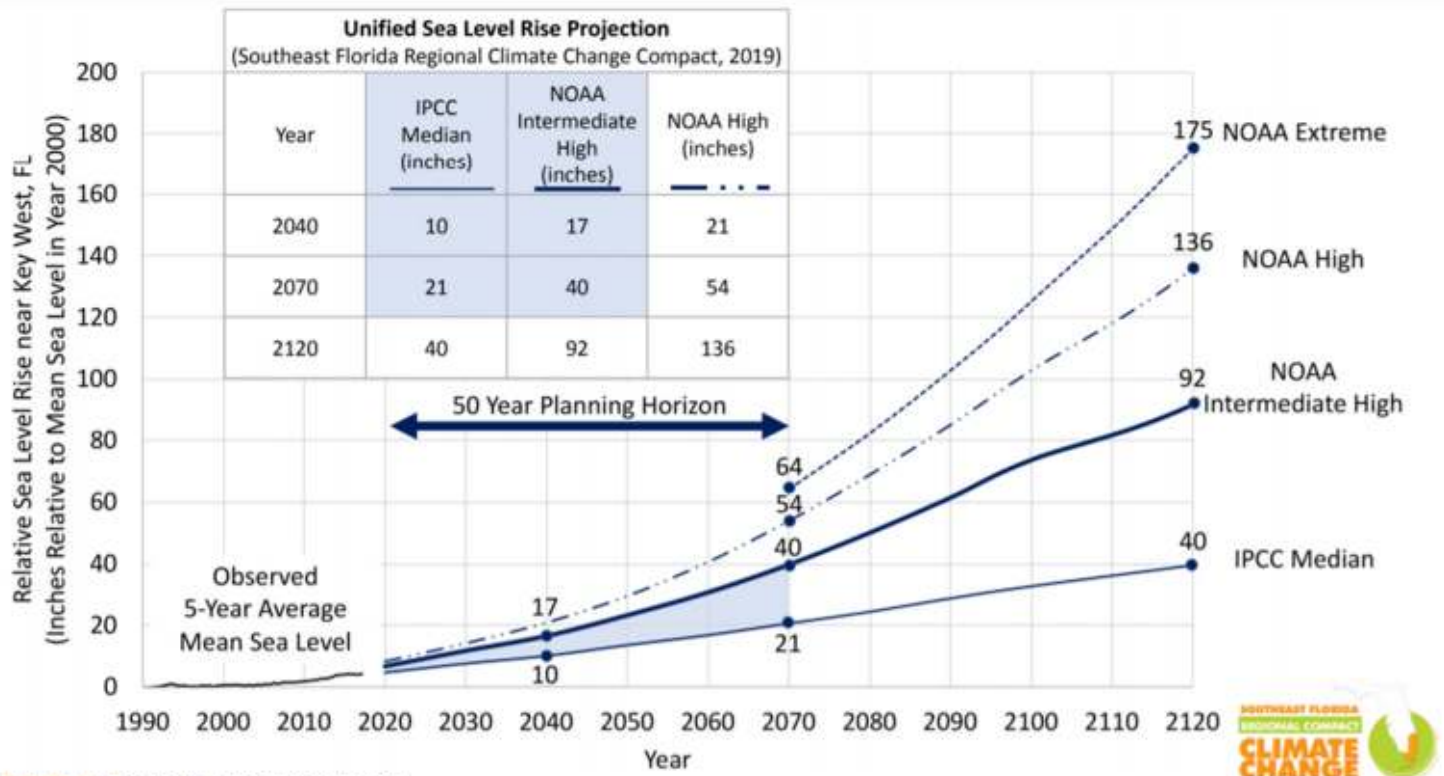


FIGURE 1: Unified Sea Level Rise Projection

These projections start from zero in year 2000 and are referenced to mean sea level at the Key West tide gauge. Based on the 5-year average of mean sea level, approximately 3.9 inches of sea level rise has occurred from 2000 to 2017 (see historic sea level section of guidance document). The projection includes global curves adapted for regional application: the median of the IPCC AR5 RCP 8.5 scenario (Growing Emissions Scenario) as the lowest boundary (solid thin curve), the NOAA Intermediate High curve as the upper boundary for short-term use until 2070 (solid thick line), the NOAA High curve as the upper boundary for medium and long-term use (dash dot curve). The shaded zone between the IPCC AR5 RCP 8.5 median curve and the NOAA Intermediate High is recommended to be generally applied to most projects within a short-term planning horizon. Beyond 2070, the adaptability, interdependencies, and costs of the infrastructure should be weighed to select a projection value between the IPCC Median and the NOAA High curves. The NOAA Extreme curve (dash curve) brackets the published upper range of possible sea level rise under an accelerated ice melt scenario. Emissions reductions could reduce the rate of sea level rise significantly.

The 2019 Southeast Florida Regional Climate Change Compact’s (Compact) Unified Sea Level Rise (SLR) Projection is depicted above. The City Commission adopted this projection by resolution in May 2020 and provides a technical foundation for sea level rise adaptation planning activities.

Alignment to Approved Plans

The Adaptation Action Area program has the following Strategic Connections with approved City plans and priorities.

1. This item is a *2021 Top Commission Priority*, advancing the **Resiliency** initiative.
2. This item supports the *Press Play Fort Lauderdale 2024 Strategic Plan*, specifically advancing:
 - The Infrastructure Focus Area
 - Goal 1: Be a sustainable and resilient community.
 - Objective: Reduce flooding and adapt to sea level rise.
3. This item supports the *Advance Fort Lauderdale 2040 Comprehensive Plan* specifically advancing:

- The Infrastructure Focus Area
- The Sanitary Sewer, Water & Stormwater Element
- Goal 6: Ensure that all areas of the City are reasonably protected from flooding giving due consideration to the City’s natural and built environment.

and

- The Public Safety Focus Area
- Coastal Management, Community Health and Safety Element
- Objective CM 2.3: Adaptation Action Areas (AAAs)
- Continue to identify and appropriately invest in vulnerable areas through the designation of Adaptation Action Areas (AAAs).



In addition, this initiative is responsive to our residents as reflected in the 2019 Neighbor Survey that indicated our residents are well informed about climate change issues and the impacts to our community, with 82% indicating they have observed coastal water level increases and 81% indicating they have observed increased flooding. Satisfaction with the prevention of tidal- related flooding was low, with only a 20% satisfaction rating.

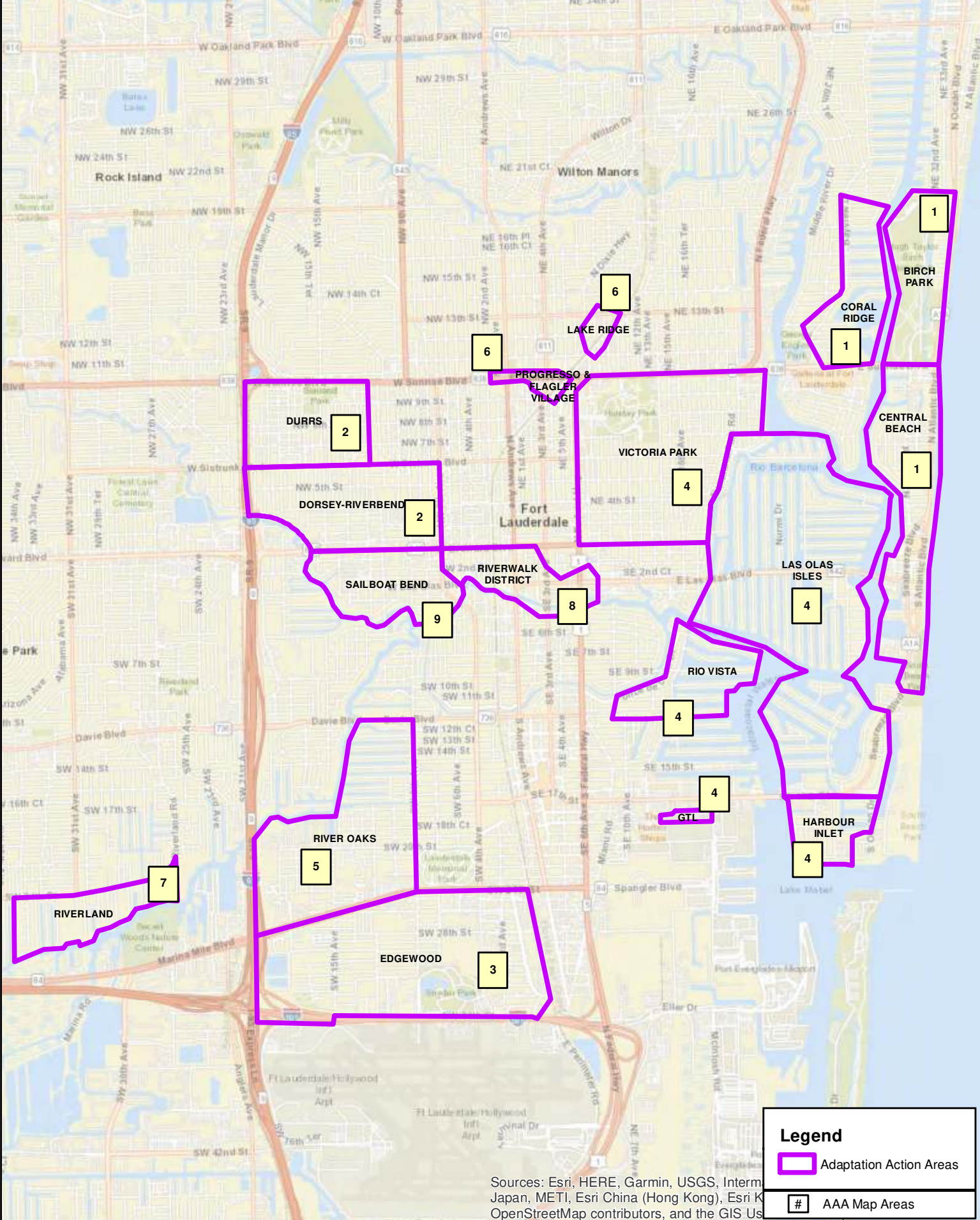
Building upon the City’s leadership in the area of sustainability, the use of AAAs is another tool being integrated into operations to combat coastal flooding and reduce risk to rising sea levels. The designation of AAAs is an example of neighbors’ ideas, coupled with the best available data and integrated into our Vision Plan, being transformed into action through proactive and informed decision-making in order to build community today and meet the challenges of tomorrow.

City of Fort Lauderdale Adaptation Action Areas and Projects



The pages that follow provide maps outlining the City of Fort Lauderdale’s Adaptation Action Areas and projects programmed for funding within those AAAs. Areas were chosen if they meet the AAA minimum qualifications in state legislation as well as the criteria outlined in Coastal Zone Element of the City Comprehensive Plan – Advance Fort Lauderdale. The “Designated Adaptation Action Areas and Projects” are reviewed and updated annually by staff for inclusion in the five-year Community Investment Plan (CIP) for funding consideration.

Table 1 below summarizes the status of designated CIP projects in the Adaptation Action Areas. In the FY2021 CIP, 45 active or completed projects were identified in the 17 AAAs, of which 22 projects had been completed. For this update, funded CIP projects as of June 2021 were reviewed to identify projects that should be added or removed from this list. Reasons for deletion from this list may include project cancellation, changes in scope which removed AAA related elements, or transfers of scope to other projects. Additions may include newly created or identified projects that match the eligibility criteria. For the purposes of this chapter, a project is listed as completed when the construction activities have finished. Consequently, in the current fiscal year, the number of completed projects has increased to 25 and the total number of total active or completed projects has increased to 48.

Table 1: Summary of Designated Adaptation Action Areas (AAA) and Status of Projects in Those Areas			
Map #	Designated AAAs	# Active or completed AAA projects	Status (CIP Project #)
1	Birch Park	2	2 Completed (12063, 12247)
1	Central Beach	6	3 Completed (11900, 12065, 12094) 2 in Construction (12315, 11681) 1 in Design (12435)
1	Coral Ridge	2	2 Completed (12019, 12032)
2	Dorsey-Riverbend	1	1 in Design (11845)
2	Durrs	1	1 in Design (11844)
3	Edgewood	2	2 in Design (11842, 12264)
4	GTL (George T. Lohmeyer) Wastewater Plant	2	1 Completed (12106) 1 in Construction (11781)
4	Harbour Inlet	2	1 Completed (12026) 1 in Construction (12087)
4	Las Olas Isles	5	4 Completed (12014 , 12112, 12120, 12339) 2 in Design (12074, 12524)
4	Victoria Park	2	1 Completed (12035) 1 in Design (12082)
4	Rio Vista	6	2 in Completed (12020 , 12025) 3 in Construction (12034, 12337, 12523)
5	River Oaks	2	2 in Construction (11419, 11868)
6	Progresso & Flagler Village	2	1 in Completed (12064) 1 in Design (11843)
6	Lake Ridge	1	1 in Completed (12024)
7	Riverland	2	2 Completed (12042, 12403)
8	Riverwalk District	6	3 Completed (11821, 11827, 12057) 1 in Construction (11722) 2 in Design (12478, 12479)
9	Sailboat Bend District	4	2 Completed (12022 , 12031) 2 in Design (12613 , 12615)
Project numbers in bold indicate change in project status from FY2021 CIP.			



Legend

-  Adaptation Action Areas
-  AAA Map Areas

Sources: Esri, HERE, Garmin, USGS, Intermap, Japan, METI, Esri China (Hong Kong), Esri Korea, Swisstopo, Mapbox, OpenStreetMap contributors, and the GIS User Community

Path: U:\GIS\Utilities\SDRM\MapPS\Stormwater Master Plan\Map\CP_Location\Map\AAAs\FY2022-2024\AAAs\11_KenMap.mxd Date: 6/2/2024



**FY 2022-2026
Designated Adaptation Action Areas and Projects
(June 2021)**



Project Number	Association	Title	Status
12063	BIRCH PARK	3301 NE 16 ST STORMWATER IMPROVEMENTS	Complete
12247	BIRCH PARK	BROWARD COUNTY SEGMENT II BEACH NOURISHMENT	Complete
12065	CENTRAL BEACH	777 BAYSHORE DR STORMWATER AND PARK IMPROVEMENTS	Complete
11681	CENTRAL BEACH	SR A1A STREETScape IMPROVEMENTS (WESTSIDE)	Construction
12094	CENTRAL BEACH	SOUTH BEACH ELECTRICAL IMPROVEMENTS	Complete
11900	CENTRAL BEACH	LAS OLAS BLVD CORRIDOR IMPROVEMENTS	Complete
12315	CENTRAL BEACH	NEW AQUATICS CENTER	Construction
12435	CENTRAL BEACH	Breakers Avenue Road Improvements	Design
12032	CORAL RIDGE	2771 NE 15TH STREET STORMWATER IMPROVEMENTS	Complete
12019	CORAL RIDGE	2625 NE 11TH COURT STORMWATER IMPROVEMENTS	Complete

Legend

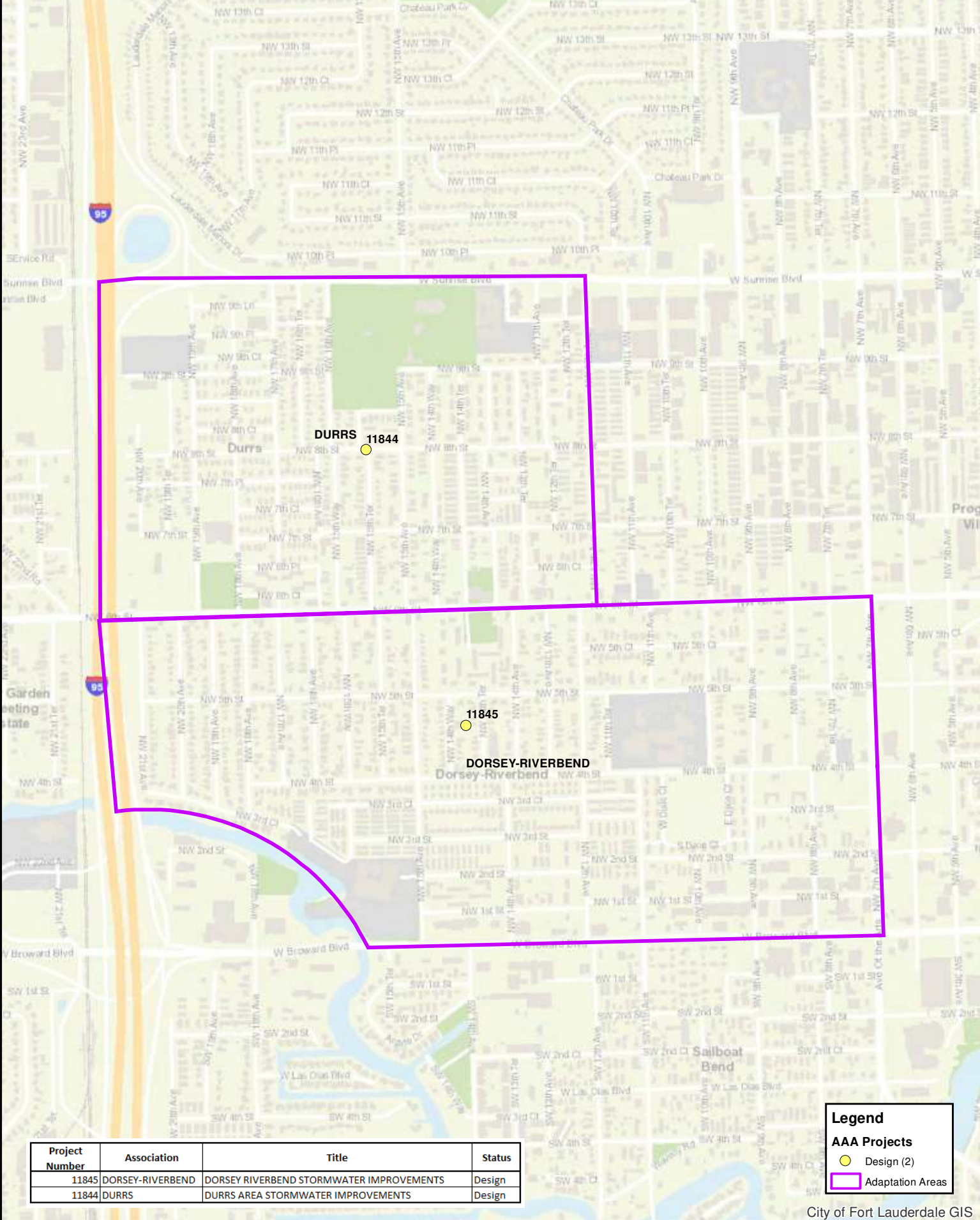
AAA Projects

- Complete (7)
- Construction (2)
- Design (1)
- Adaptation Areas

City of Fort Lauderdale GIS



Map #01
FY 2022-2026
Designated Adaptation Action Areas and Projects
(June 2021)
 FY 2022 - 2026 Proposed Community Investment Plan - 276



Legend

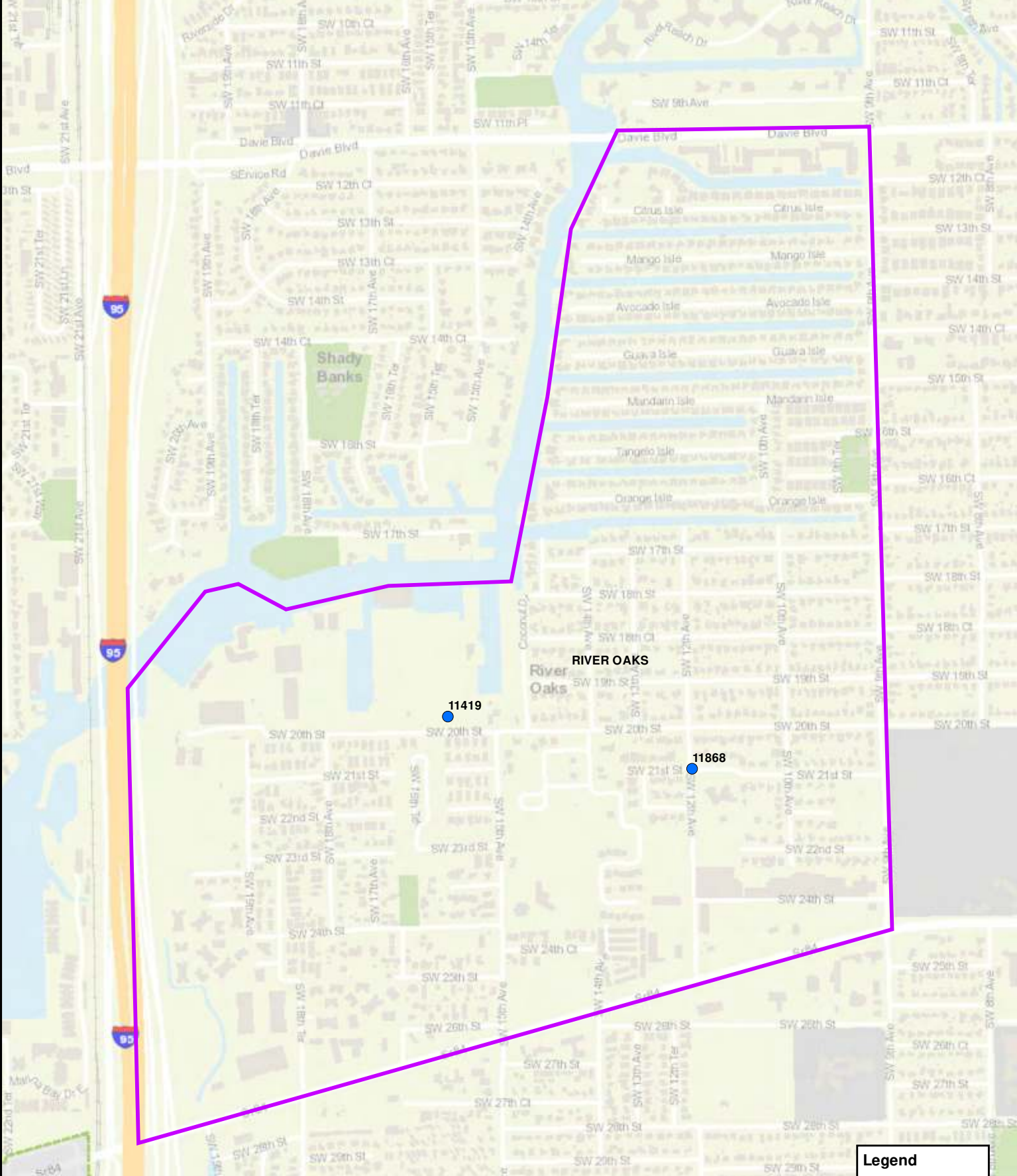
- AAA Projects
- Design (2)
- ▭ Adaptation Areas

Project Number	Association	Title	Status
11845	DORSEY-RIVERBEND	DORSEY RIVERBEND STORMWATER IMPROVEMENTS	Design
11844	DURRS	DURRS AREA STORMWATER IMPROVEMENTS	Design

City of Fort Lauderdale GIS



Map #02
FY 2022-2026
Designated Adaptation Action Areas and Projects
(June 2021)



Project Number	Association	Title	Status
11868	RIVER OAKS	RIVER OAKS STORMWATER ANALYSIS	Construction
11419	RIVER OAKS	RIVER OAKS STORMWATER PARK	Construction

Legend

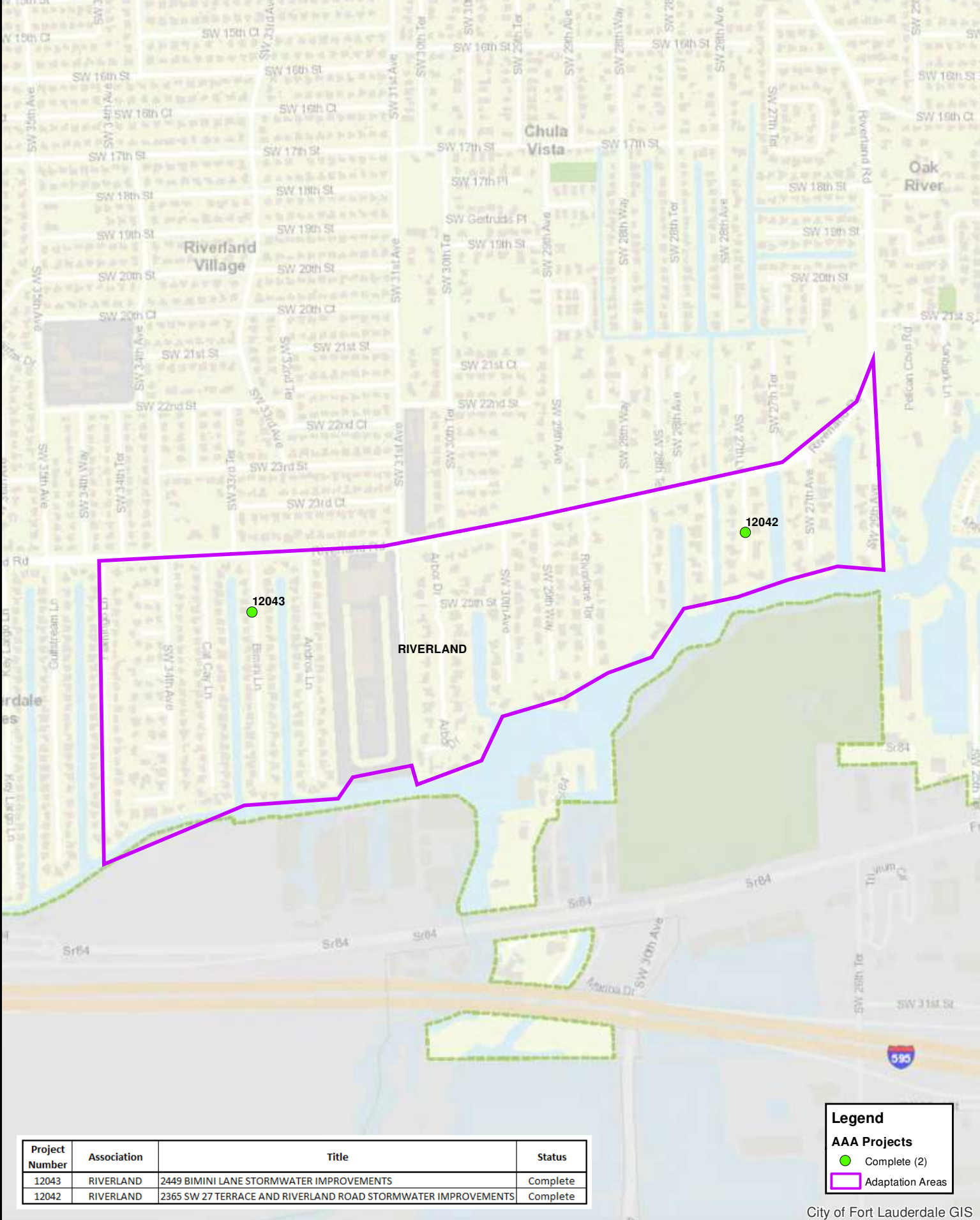
AAA Projects

- Construction (2)
- Adaptation Areas

City of Fort Lauderdale GIS



Map #05
FY 2022-2026
Designated Adaptation Action Areas and Projects
 FY 2022 - 2026 Proposed Community Investment Plan - 280 (June 2021)



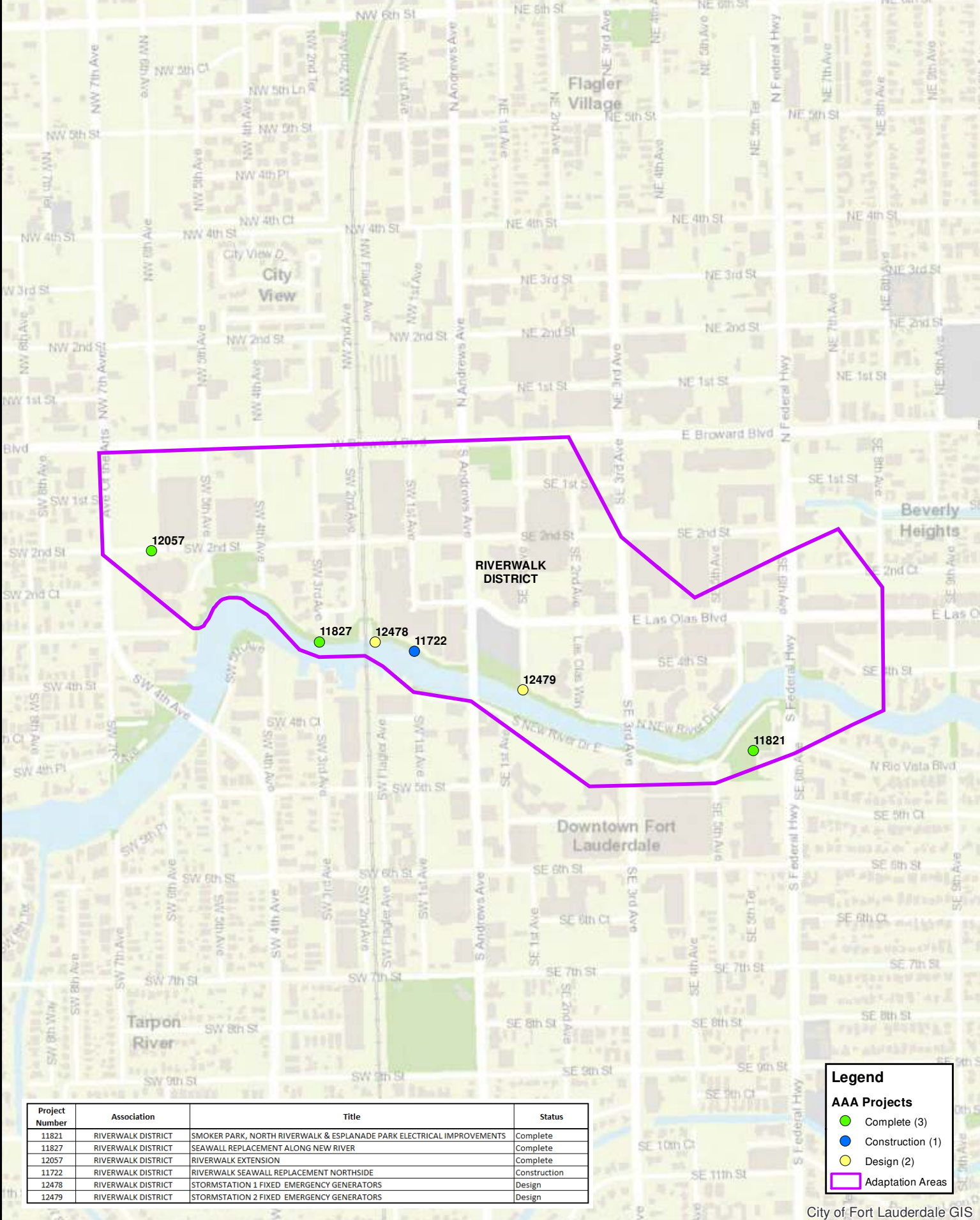
Project Number	Association	Title	Status
12043	RIVERLAND	2449 BIMINI LANE STORMWATER IMPROVEMENTS	Complete
12042	RIVERLAND	2365 SW 27 TERRACE AND RIVERLAND ROAD STORMWATER IMPROVEMENTS	Complete

Legend

AAA Projects

- Complete (2)
- Adaptation Areas

City of Fort Lauderdale GIS



Project Number	Association	Title	Status
11821	RIVERWALK DISTRICT	SMOKER PARK, NORTH RIVERWALK & ESPLANADE PARK ELECTRICAL IMPROVEMENTS	Complete
11827	RIVERWALK DISTRICT	SEAWALL REPLACEMENT ALONG NEW RIVER	Complete
12057	RIVERWALK DISTRICT	RIVERWALK EXTENSION	Complete
11722	RIVERWALK DISTRICT	RIVERWALK SEAWALL REPLACEMENT NORTHSIDE	Construction
12478	RIVERWALK DISTRICT	STORMSTATION 1 FIXED EMERGENCY GENERATORS	Design
12479	RIVERWALK DISTRICT	STORMSTATION 2 FIXED EMERGENCY GENERATORS	Design

Legend

AAA Projects

- Complete (3)
- Construction (1)
- Design (2)
- Adaptation Areas

City of Fort Lauderdale GIS



Map #08
FY 2022-2026
Designated Adaptation Action Areas and Projects
(June 2021)

